



2009-10 TUITION & FEE REPORT HIGHLIGHTS

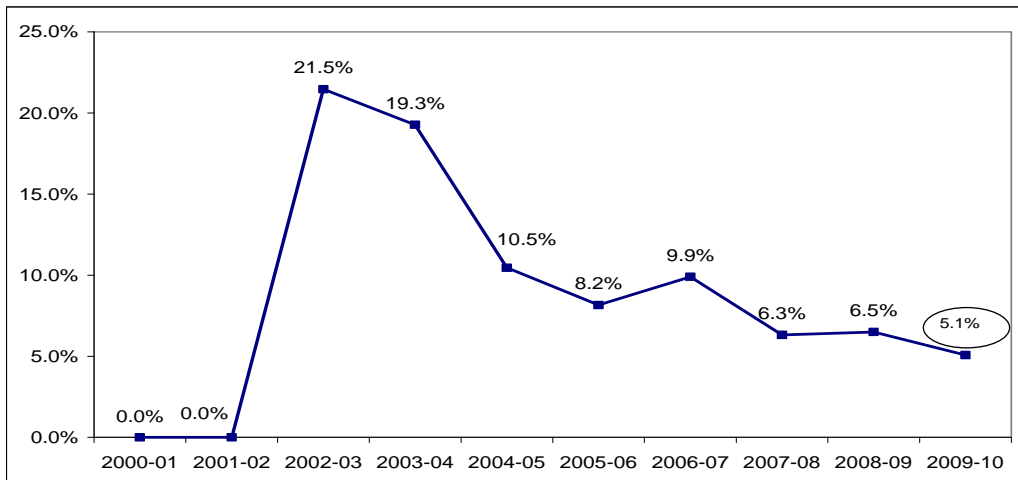
Tuition & Mandatory E&G Fees: The average tuition and mandatory E&G fees (fees for instruction-related activities) for in-state undergraduate students will increase by **5.1%** system wide (5.1% at four-year institutions, and 7.7% at the VCCS) in 2009-10. These charges increased by 6.5% last year. Tuition and all mandatory fees (includes mandatory non-E&G fees such as athletic fees, student health service fees, and student government fees) will increase by **5.2%**, significantly lower than the **7.3%** increase in 2008-09.

2009-10 Full-Time In-State Undergraduate Student Charges

	Tuition and E&G Fees	% Incr.	Tuition and All Fees	% Incr.	Total Charges (incl. R&B)	% Incr.
4-Year Insts.	\$5,003	5.1%	\$7,984	5.3%	\$15,642	5.2%
VCCS	\$2,767	7.7%	\$2,781	7.6%	\$2,781	7.6%
All Inst.	\$4,734	5.1%	\$7,242	5.2%	\$14,666	5.1%

In total, including room and board charges, Virginia undergraduate students will pay on average **5.1%** more in 2009-10 than they did in the prior year. However, the FY2010 tuition increase will be the lowest annual increase since FY 2002.

Average Annual Increases Tuition and E&G Fees for In-State Undergraduate Students 2000-2010



The American Recovery and Reinvestment Act of 2009 (ARRA): Virginia will receive approximately \$4.8 billion in direct appropriations from the ARRA over the next two years. The 2009 General Assembly allocated \$126.7 million of those funds to public higher education institutions with the intent to mitigate the need to raise in-state tuition at the colleges and universities in FY2010. The ARRA funding offsets the general fund reduction in FY2010 and keeps the higher education budget cut at the FY2009 level.

The following chart shows the allocation of the ARRA funds to Virginia's public colleges and universities.

Allocation of the American Recovery and Reinvestment Act of 2009

Institution	2009-10
Christopher Newport University	\$3,492,779
College of William and Mary	\$3,815,722
George Mason University	\$10,912,431
James Madison University	\$7,301,608
Longwood University	\$3,169,668
Norfolk State University	\$4,230,688
Old Dominion University	\$12,787,803
Radford University	\$5,482,461
University of Mary Washington	\$2,387,643
University of Virginia	\$10,722,655
UVA-Wise	\$1,618,522
Virginia Commonwealth University	\$20,541,737
Virginia Military Institute	\$1,242,513
Virginia State University	\$1,305,733
Virginia Tech	\$17,322,599
Richard Bland College	\$343,420
VA Community College System	\$19,406,739
Virginia Institute of Marine Science	\$660,246
Total	\$126,744,967

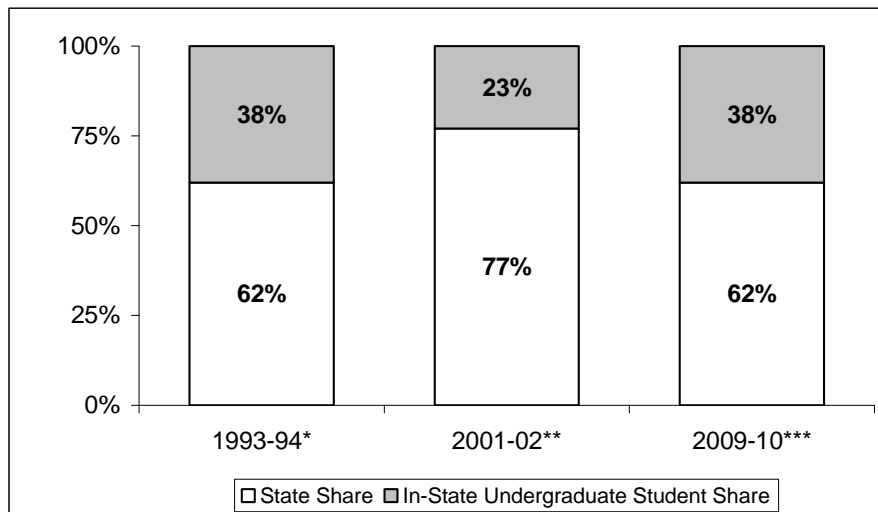
Tuition & Fee National Rank: In 2008-09, in-state undergraduate tuition and fees at University of Virginia, Virginia's flagship institution, ranked 10th highest nationally (up from 11th in 2007-08). Tuition and fees at other public colleges and universities ranked 10th, unchanged from the 2007-08 ranking. Charges at the community colleges remained below the national average, ranking 29th (up from 30th in 2007-08). It is anticipated that Virginia's tuition and fee increases will be generally comparable to increases around the country in FY2010.

Tuition & Fees Rank Among All States

	2008-09	Estimated 2009-10
Major Public Universities (UVA)	10 th	10 th
Public Colleges & Universities (GMU, ODU, JMU, LU, RU)	10 th	10 th
Public Community Colleges	29 th	29 th

Tuition Cost-Share Trends & Affordability: In 2003, the Joint Subcommittee on Higher Education Funding Policy developed a goal of a 67%/33% cost share between the state and students. However, budget cuts and tuition increases during the past five years have led to an estimated cost share ratio of 62% for the state and 38% for students for FY2010. That cost share ratio matches the highest historical level last experienced in FY1994 and represents a 15% increase in the cost to students since FY2002.

Cost-Share Relationship between the State and In-State Undergraduate Students



*The tuition policy required out-of-state students to pay 100% of cost, but had no cost share requirement for in-state undergraduate students. Calculation based on the average appropriated cost of education.

**The goal of the tuition policy was for in-state undergraduate students to pay 25% of the cost. Calculation based on the average appropriated cost of education.

***The goal of the tuition policy is for students to pay 33% of the cost. Calculation based on average guideline calculated cost of education.

As a percentage of per capita income, the average total cost for an in-state undergraduate student living on campus at a four-year institution is estimated to be 40.2% for FY2010. This measure of affordability has also crept steadily higher from a low point of 33.1% in FY2002 and is now all but back to the peak (the low point in terms of average affordability) of 40.3% in FY1995.

Tuition Moderation Incentive Fund: The Tuition Moderation Incentive Fund (TMIF) was established by the General Assembly in 2008 to curb tuition increases and preserve a level of affordability for in-state undergraduate students. The TMIF capped the annual tuition increase for in-state undergraduate students and provided additional general fund support contingent upon institutions meeting the eligibility requirements. The TMIF was discontinued in FY2010.